

YOUR GLUING
SOLUTIONS PARTNER

MELER 

MICRON+ TITAN PUR

SIMPLICITY THAT BOOSTS PRODUCTIVITY
IN PUR APPLICATIONS



MICRON
by meler

! Versión no definitiva: sujeta a modificaciones

MICRON+ TITAN PUR

Melting system with **gear pump**, compatible with PUR Hot melt adhesives. Designed for 20kg PUR adhesive blocks without aluminum foil.

EASY CLEAN CONCEPT

SYSTEM TO ENSURE EASY MAINTENANCE AND CLEANING

Discover the **Easy Clean** concept of Micron+ Titan PUR!

It's simple and accessible design is the key to streamlining your daily tasks. With full accessibility to all components of the equipment, cleaning tasks become easier and safer. Thanks to its tiltable hopper fastening system, accessing the interior is now a secure and swift task, facilitating any inspection or service work you need to perform.

The **Easy Clean** concept offers a removable grill and a 2.5L buffer capacity. The tank has no corners or heating wings, preventing the unwanted accumulation of adhesive residues, making maintenance tasks simple and efficient.

But that's not all, we've thought of every detail to make your work more comfortable. The equipment has been designed with the operator's tasks in mind, and its optimal height of **1100 mm** allows for effortless manual adhesive loading. Choose Micron+ Titan PUR and achieve maximum productivity without complications!



3 easy steps

Full access to the equipment
Fully tiltable hopper

MICRON+ PLATFORM

USABILITY AND FULL CONTROL TO OPTIMISE YOUR WORK



MAXIMUM CONNECTIVITY FOR INDUSTRY 4.0

A variety of **communication protocols** enable connection to the main machine.

- Profibus
- Profinet
- Ethernet-IP
- Ethercat



SALIDA HASTA 8 CANALES

Micron+ Titan PUR is available with up to **8 electrical outlets** for heated hoses.

(+ 1 safety thermostast)



INTEGRATED STARBI

Tactile programming of channels and triggers. Easy to use, the Starbi trigger controller allows the programming of multiple trigger patterns.



ADA (ADHESIVE DELIVERY ASSISTANT)*

By entering the machine speed, grammage required and head width, the ADA will automatically calculate the required pump speed.

* Exclusive option for use with laminating heads.

KEEP IT SIMPLE

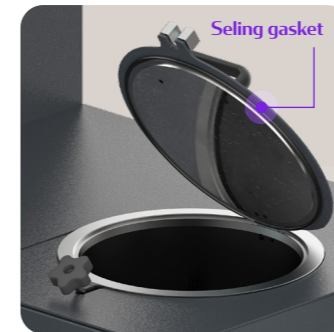
GREAT RESULTS, MINIMUM EFFORT

PLUG & PLAY GRILL

- **Removable grill for easy cleaning.**
- Grill design to optimise cleaning.
- Easy access and **quick shut-off** of the grill..

ERGONOMY AND FUNCTIONALITY

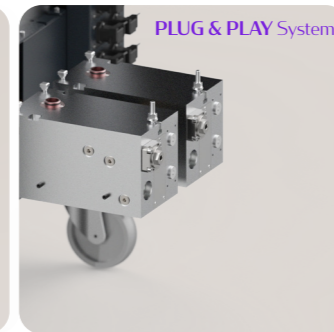
- **Ergonomics for the operator:** Loading height (1100 mm).
- Closing system with 4 clamps on a **tilting hopper**.
- Easy to close lid by means of a gasket.
- **2,5 l buffer** designed for easy cleaning.
- Simplified equipment opening for inspection.
- Individually **removable manifold**.



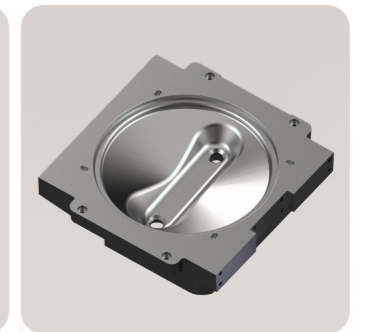
EASY LID OPENING



PLUG & PLAY GRILL



MANIFOLD EXTRACTION
PLUG&PLAY



BUFFER DESIGNED
FOR EASY CLEAN

MELTING TECHNOLOGY

ALWAYS TAKING CARE OF THE **ADHESIVE**. CONTROLS AND PREVENTS CHARRING

Micron+ Titan PUR offers you the perfect balance between melt performance and proper adhesive preservation, achieving a high melt speed of 15kg/h up to **17kg/h**..

The cylindrical hopper, designed for PUR blocks, features a **hermetically sealed lid** and a **sealing gasket**, backed by a gas injection system, which effectively prevents moisture contamination.

Melting of the adhesive is limited to the area of contact with the grid, giving us meticulous control over its condition and reducing the risk of **charring**. This process ensures that the adhesive is kept in optimum condition to achieve the highest quality results.

> TECHNOLOGY THAT MAKES A DIFFERENCE:

- **High melting speed** without pusher plate. **(15kg/h~17Kg/h)***.
- **Cylindrical hopper** for PUR blocks (up to 2 blocks of 20kg)
- Low level detector
- **Sealed lid system** + air drying
- Sealing lid with gasket
- Air injection system

* Depending on the type of adhesive, temperature and other working conditions.

MAIN APPLICATIONS

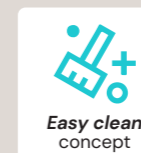


WOODWORKING

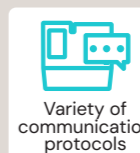


PRODUCT ASSEMBLY

BENEFITS :



Easy clean concept



Variety of communication protocols



Maximum accessibility



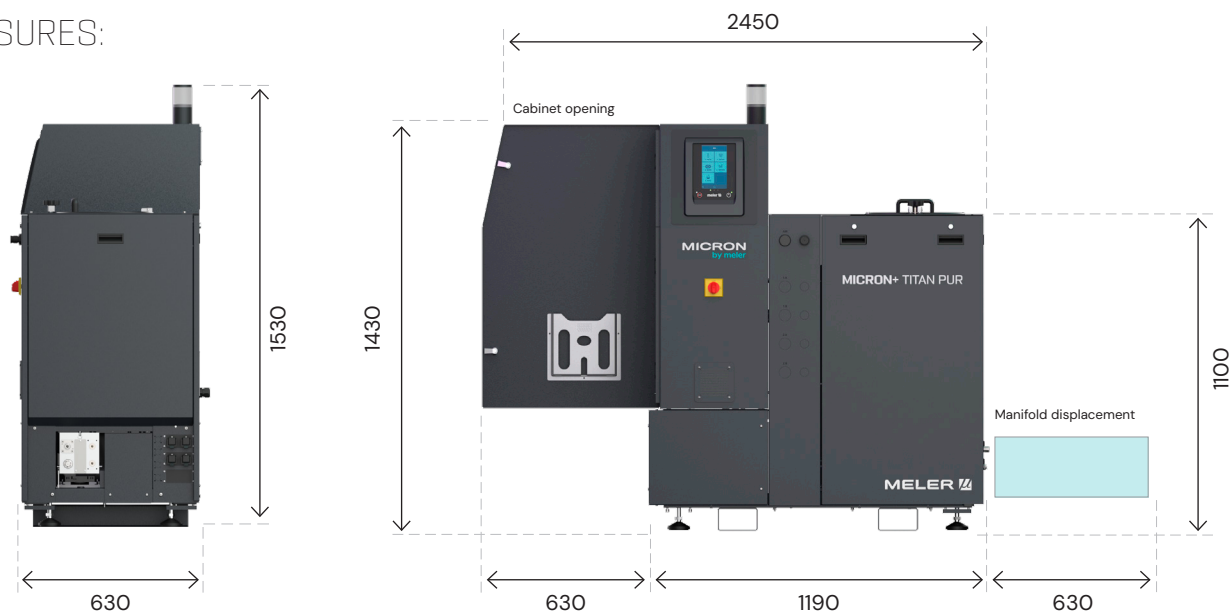
Maximum adhesive care



Energy efficiency

MICRON+ TITAN PUR

MEASURES:



TECHNICAL CHARACTERISTICS:

Tank capacity	Ø290 x 650 (2 blocs of 20 kg)	
Reserve tank capacity	2,5 l	
Reserve tank capacity	Depending on the type of adhesive, temperature and other working conditions.	
Pumping rate	Simple pump	1 cc/rev • 2,5 cc/rev • 4 cc/rev • 8 cc/rev
	Double pump	2x0.93 cc/rev • 2x1.86 cc/rev • 2x3.71 cc/rev
Number of pumps	1 • 2	
Number of hydraulic outputs	2 ó 4 per pump	
Number of electrical outlets	2 • 4 • 6 • 8 + 1 safety thermostat ⁽¹⁾	
Pumping speed	10–80 rpm (0–100 rpm range)	
Temperature range	40 a 200°C (100 a 392°F)	
Temperature control	RTD ±0.5°C (±1°F) Pt-100 • Ni-120 • NTC	
Maximum working pressure (a 6 bar)	80 bar (1.160 psi)	
External functions	Inputs	On-Off • Standby • Activity Control • Pumping OFF Communications Off • Reset Alarms • External Speed Control • External Pumping Control • VP Control • Electrical Outputs Inhibit
	Outputs	Standby • Temperature zones OK • Ready • Running • Alarm • Level • No level • Driver error
Communications (optional)	ModBus • Profinet • Profibus • Ethernet IP • Ethercat	
Electrical connection	3N ~ 400V 50/60Hz + PE • 3X200 ~ 240 + PE	
Dimensions (L x W x H)	1190 x 630 x 1430 mm	
Weight	130 kg	

(1) Equipment up to 4 electrical outputs: 1800W per channel. Equipment with 6 to 8 electrical outputs: 1200W per channel.