

# CANTHO

WELL MADE THINGS LAST LONGER



## CANTHO

**HOTMELT UNIT  
WITH A HIGH MELTING RATE**

Hotmelt unit especially designed for wood applications and for automatic bookbinding systems. Thanks to its great performance (melting rate of up to 5 kg/h) it can be used in simple applications or in highly demanding processes.

- It can be used with **2 kg blocks of PUR adhesives with or without inliner.**
- Fast charging of PUR or EVA blocks or granulate forms (4000 cm<sup>3</sup> capacity).

## MAIN FEATURES

### MELTING RATE OF UP TO 5 KG/H

CANTHO HAS GREAT PRODUCTION POTENTIAL AND SIMPLICITY

- Suitable for melting different high-viscosity adhesives
- EVA and PUR adhesives in blocks or granulate forms
- Easy control of adhesive consumption
- Available with or without control panel
- Low maintenance cost

### EASY TO INTEGRATE ON PRODUCTION LINES

ADAPTS TO THE DEMANDS OF THE CUSTOMER AND THE PROCESS, HIGHLY FLEXIBLE IN TERMS OF APPLICATIONS

- Its light weight facilitates integration
- Small melter size
- Easy-to-access interior makes it easier to extract the adhesive block

### EASY TO USE AND MAINTAIN

ALL AREAS ARE EASILY ACCESSIBLE FOR CLEANING

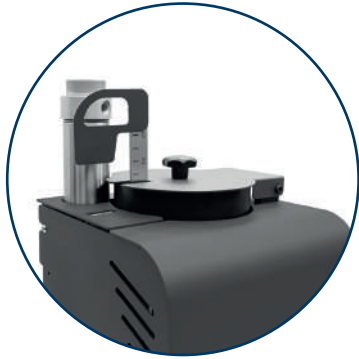
- Safe and easy to use

## BENEFITS CANTHO

- Easy accessibility
- Quick and easy to clean
- Low maintenance cost
- Efficient melting
- Slugs with or without inliner
- Easy to integrate on production lines
- Minimal time and cleaning is required to change adhesives or colours

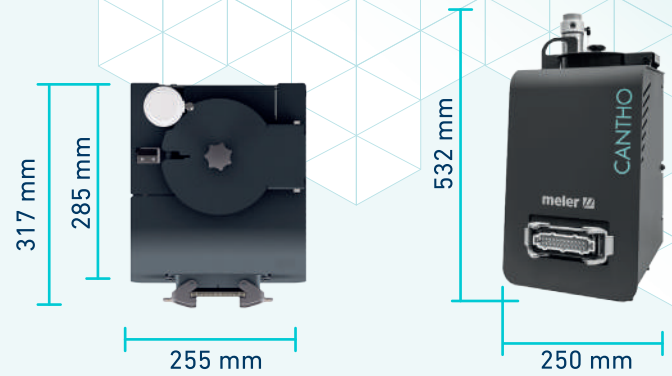
## KEY ASPECTS

CANTHO WITHOUT PISTON



## DIMENSIONS

UNIT



## APPLICATIONS

CANTHO



WOOD  
APPLICATIONS



BOOKBINDING

## TECHNICAL

SPECIFICATIONS

Working temperature	20... 160° C for PUR/ 20...210° C for other adhesives
Melting rate*	Up to 5 kg/h
Compressed air connection	5...6 bar
Type of temperature sensor	Pt100 o Ni120
Power supply voltage	230 VAC, L+N+PE or L1 + L2+PE
Heating power	2400 W
Room temperature	5... 40° C
Approximate weight	25 kg

\*Depending on the type of adhesive.