

Empowering
what matters.
Empowering
hoses.

ARION
by meler

5. EMPOWERING HOSES

ARION BOLD

TO EXPLORE NEW WORLDS

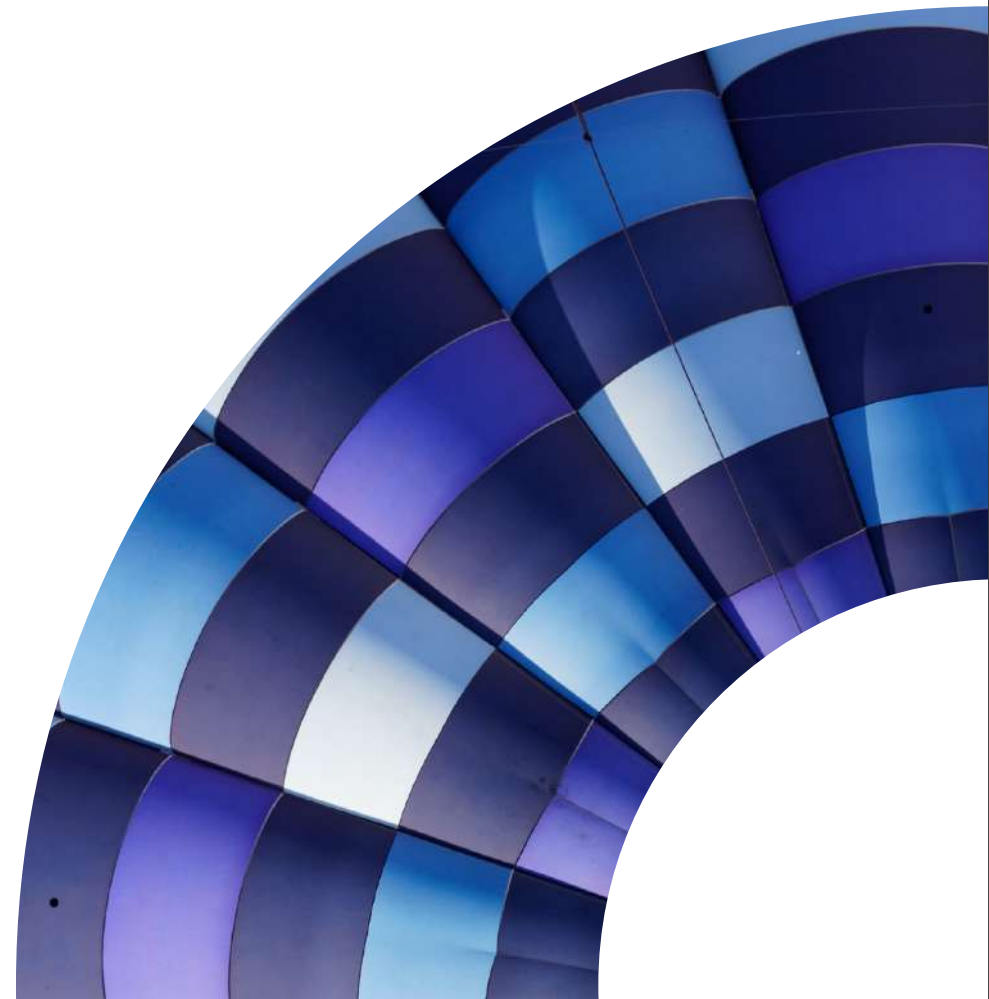
Sometimes you have to go further to find the best solution.

Sometimes you need to surpass all limits for everything to work as it should. These very high pressure conditions make it impossible to have high consistency and reliability.

Our special-coated and large-diameter hose solutions will help us in the most demanding applications, in processes involving long high-pressure pipelines, avoiding pressure pulsations and improving the reliability of our applications.

The perfect solution for advanced machinery and extruders, making it possible to transport more viscous and complex fluids, all types of greases, and butyls. Everything is possible thanks to the perfect solution to go further. Don't let the pressure stop you.

It opens the door to a new world of applications, to do things that others can't, and to explore new territory. With the assurance that the reliability, accuracy and performance of your processes will not stand in the way of these hoses.



ADVANTAGES



Use of new applications



Increased precision in the adhesive flow



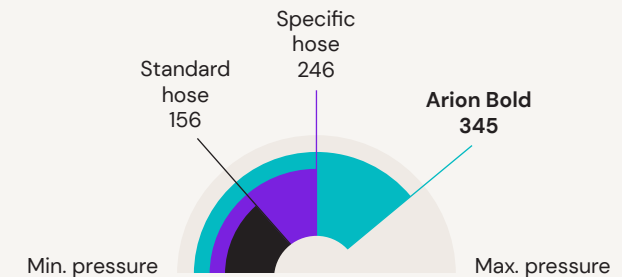
Increased fluidity and efficiency



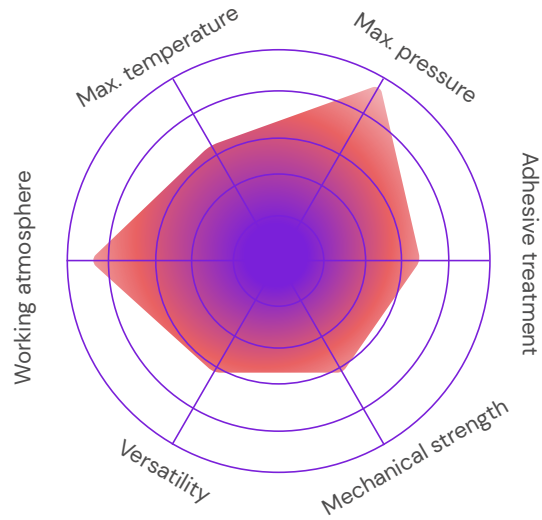
Achieving the impossible



Optimizing your work



CHARACTERISTICS



USES

Specialized in:

Greases, butyls, silicones

Applications:

Fluid applications

Markets:

Textiles, Automotive, Packaging, Assembly, Mattresses, Wood, Graphic arts, Construction.

SPECIFICATIONS

Diameter

13, 16 y 20 mm

Lengths

From 0.6 to 10m

Maximum pressure 200°C (bar)

345 (Ø13, Ø16, Ø20)

Hydraulic connection (female)

JIC 3/4" (Ø13); M22x1,5 (Ø13); JIC 11/16" (Ø16);
M30x2 (Ø20) M30x1,5 (Ø20)

Minimum bending radius (mm)

190(Ø13), 210(Ø16), 400(Ø20)

Consumption (Watt/m)

90-225

Voltage

200/230V AC

Max temp.

200°C

Temperature sensor

Pt100, Ni120 and NTC

