



MELER APP

HOW TO INSTALL AND USE IT

ARAZURI, SEPTEMBER 2020

MELER APP

HOW TO INSTALL AND USE IT

TABLE OF CONTENTS

• Introduction	2
• Download and installation in the laptop	3
• Connecting USB cable to the unit	6
• Power on the unit	7
• Connecting USB cable to the laptop	8
• Upgrading the software	9
– HMI card upgrading	11
– IOC and TC card upgrading	12
• Configuration	16
– Save configuration	17
– Load configuration	18
• Datalogger	19

INTRODUCTION

All the units of the new Meler platform can be connected to a computer using specific software to perform the following functions:

- Update the machine software
- Save a backup of your configuration data
- Restore the backup of configuration data
- Download the datalogger which is the operating data of the last weeks

To program a device using the Meler APP, you must have:

- Computer. In order to work properly with this software the OS must be Windows 7 or higher
- * .Hex program to be installed on the machine
- USB to MicroUSB cable like most of those used to charge an Android mobile



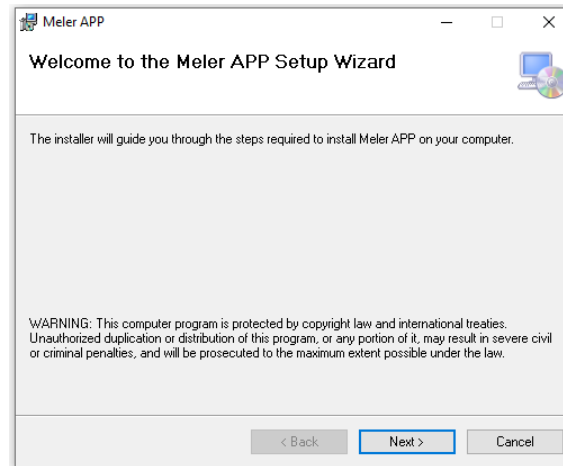
USB to MicroUSB cable

DOWNLOAD AND INSTALLATION IN THE LAPTOP

The software necessary to carry out these functions can be downloaded from the FOCKE MELER website in the "Related documentation" section of each product.

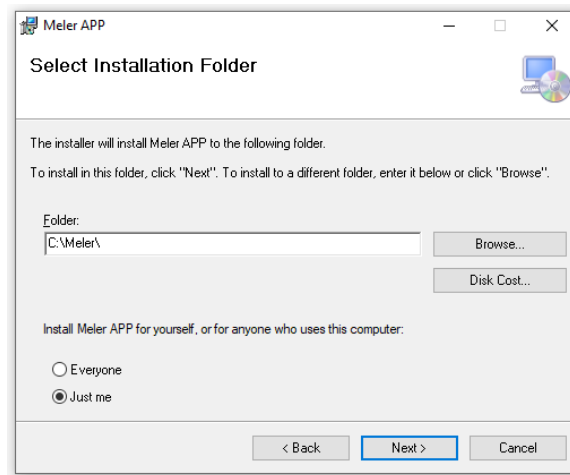
A compressed .zip file will be downloaded where the "Meler APP" application installer is located.

We follow the installer instructions by clicking Next in all the windows:

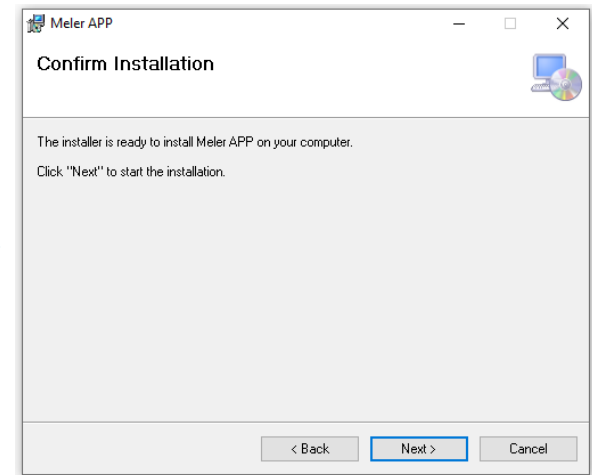


Programming assistant screen. Press next

DOWNLOAD AND INSTALLATION IN THE LAPTOP

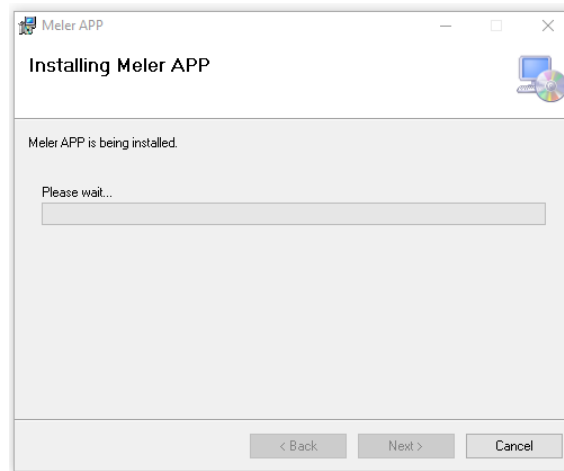


Programming assistant screen. Press next

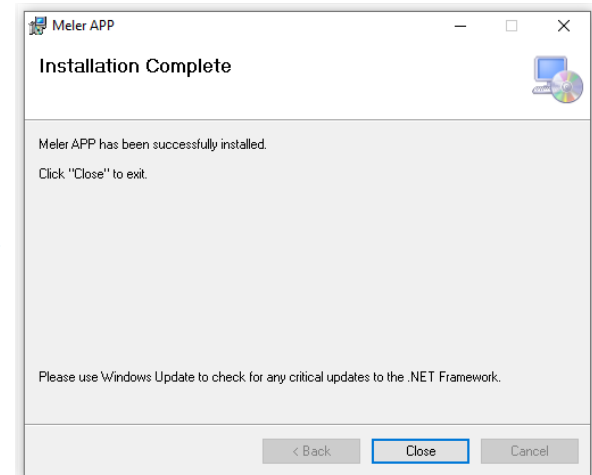


Programming assistant screen. Press next

DOWNLOAD AND INSTALLATION IN THE LAPTOP



Programming assistant screen. Press next



Programming assistant screen. Press close

At the end of the installation, the following icon will appear on the desktop:



CONNECTING USB CABLE TO THE UNIT

First make sure the unit is turned off. Open the front door and connect the USB cable to the HMI card.

Note: Do not connect the other end of the cable to the laptop yet.



HMI card. The blue arrow indicates where the MicroUSB connector is placed



Detail of the microUSB connection with the HMI card

POWER ON THE UNIT

Once the internal USB connection is finished, we can connect the unit to the power supply and turn it on using the power On/Off switch until the unit is ready to work.

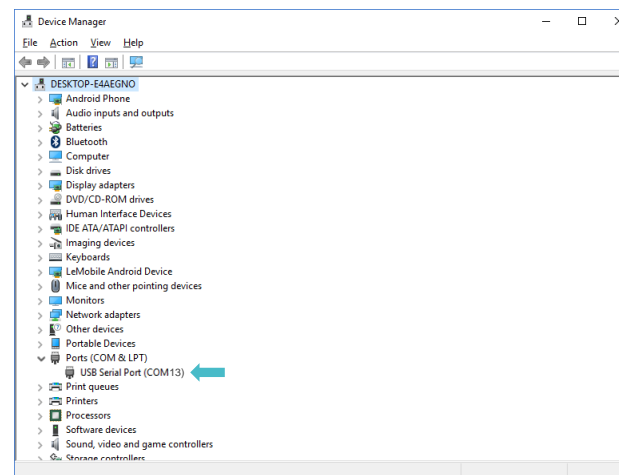


CONNECTING USB CABLE TO THE LAPTOP

With the unit powered up and started, the other end of the USB cable must be connected to the computer, waiting for the recognition of the device and installing the new COM port.

To know which COM port has been used, access the "Device Manager" and check which is the new port created after the cable has been connected.

Disconnect and connect the USB cable to the computer to check which port disappears and appears. That will be the COM port that we will have to use later.

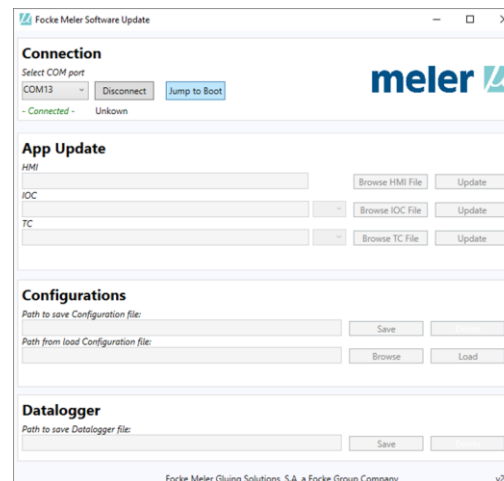


Windows device manager showing the COM port installed when connecting the USB cable

UPGRADING THE SOFTWARE

Run the “Meler APP” application:

1. Select the COM port.
2. Press the “Connect” button. If the computer is able to establish communication with the unit, the status - **Connected** - will be displayed.
3. Press “Jump to Boot”. If the unit successfully enters its Boot mode, the type of machine connected and the versions of the unit will be displayed. It will show the Boot screen.



Meler APP main screen

UPGRADING THE SOFTWARE

To update the unit cards, it is necessary to have the “.hex” files of the new version to be loaded. The software files will have the following structure in the name **CARD_REFERENCE_DESCRIPTION_VERSION**.hex

For example:

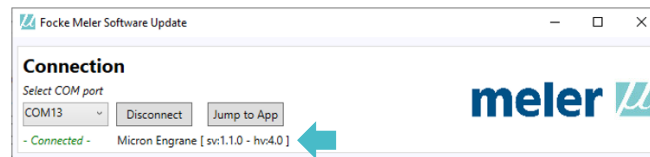
S02002101_HMI_UNIFIED_PISTON_vX.x.xxx.hex

The correct reference and the highest version available must be loaded on each card. The latest versions published on the Meler website can be obtained by downloading the SW folder of each device containing the “Meler APP” application and the most updated software.

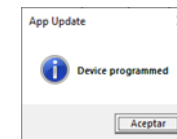
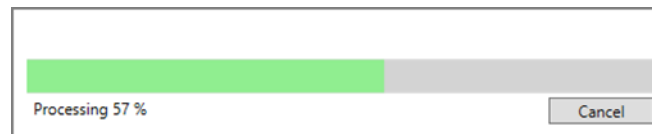
UPGRADING THE SOFTWARE

– HMI card upgrading

1. Select the file to load for the HMI card by pressing “Browse HMI File”. The file selected is shown on the screen.



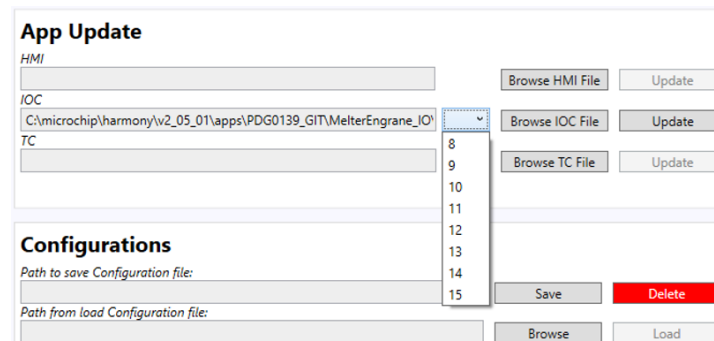
2. Press the "Update" button.
3. A charging process will start which takes several minutes.
4. At the end of the process, a complete update notice will appear.



Charging process and final warning

UPGRADING THE SOFTWARE

- IOC and TC card upgrading
1. Select the file to load for each card by pressing “Browse IOC File” or “Browse TC File”.
 2. Select “Card Number” (see number assignment table).



Card number selection

3. Press the "Update" button.
4. A charging process will start which takes several minutes.
5. At the end of the process, a complete update notice will appear.

UPGRADING THE SOFTWARE

- IOC and TC card upgrading

UNIT	IO PUMPING	IO FIRING	IO MANEUVERING	TC	TC2
STARBI	--	1	--	--	--
PISTON PUMP	--	--	--	1	--
GEAR PUMP	8	--	--	1	--
PISTON+STARBI	--	9	--	1	--
GEAR+STARBI	8	9	--	1	--
PS20 NS	8	--	10	1	2

Card number assignment table

UPGRADING THE SOFTWARE

Example: Updating HMI, IO and TC cards of a Micron + gear pump

1. Load the HMI “.hex” file, which will have a form name as

SXXXXXX_HMI_UNIFIED_MICRON + ENGRANE_vX.X.xxx.hex

into the HMI and press the “Update” button.

2. In the IOC, select card No. 8 in the drop-down menu, load the “.hex” file specific to the IO whose name will be as follows:

SXXXXXX_IO_PUMPING_MICRON + ENGRANE_vX.X.xxx.hex

and press the button “Update”.

3. Finally, select card No. 1 in the TC card drop-down menu, load the file

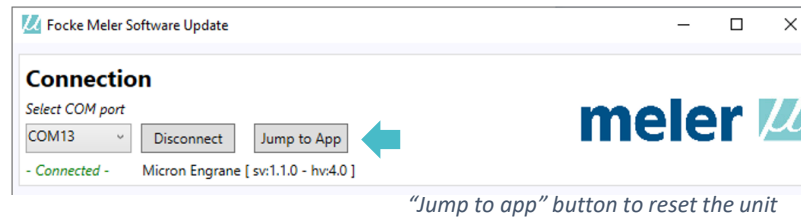
SXXXXXX_TC_MICRON + ENGRANE_vX.X.xxx.hex

and press the “Update” button.

Note: DON'T DISCONNECT THE POWER OF THE UNIT WHILE THE PROCESS IS ONGOING.

UPGRADING THE SOFTWARE

4. When software loading of all cards is finished, press the button “Jump to App”.



After that, the computer screen turns off. Finally, we will restart the unit by switching it off from the power On/Off switch.

It is important to make sure that the version loaded is the one you wanted by clicking on the time display on the HOME screen of the unit and checking the Software version section.



Checking the loaded version

CONFIGURATION

Sometimes it is necessary to save the configuration of a device (programmed products, temperature settings, calendars, inputs/outputs, ...) to perform a reset without losing data or to transfer this data to a twin device.

For that purpose, Meler APP has a “Configurations” section that allows you to save the configuration in a file and load it later when necessary.



The screenshot shows a web interface titled "Configurations". It contains two text input fields. The first field is labeled "Path to save Configuration file:" and has a "Save" button to its right and a red "Delete" button to its right. The second field is labeled "Path from load Configuration file:" and has a "Browse" button to its right and a "Load" button to its right.

Save and load configuration section

CONFIGURATION

- Save configuration
 1. Select COM port.
 2. Push “Connect” button. If the computer is able to establish communication with the unit, the status - **Connected** - will be displayed.
 3. Push “Jump to Boot” button.
 4. Push “Save” button. A window is opened where you can choose the path where the configuration file will be saved and the file name. Once selected, the saving process begins.
 5. A pop-up appears with the progress and finally a notice of saving completed.

Once the process is finished, the “.hex” file is obtained with the configuration data in the selected path.

CONFIGURATION

– Load configuration

Now it is possible to load this configuration file on any unit or on the same one after doing a factory reset.

1. Select COM port.
2. Push “Connect” button. If the computer is able to establish communication with the unit, the status - **Connected** - will be displayed.
3. Push “Jump to Boot” button.
4. Click on the “Browse” button. A pop-up will open to choose the file that contains the configuration to be loaded. Select the desired “.hex” file.
5. Click on “Load” to start the loading process.
6. When you have finished, click on “Jump to App” and turn off the computer with the power switch. When starting it again, check that the configuration is the one you wanted to load.

Note: the "Delete" button that appears in red is used to delete the configuration that is loaded in the unit. It has the same function as performing a default reset from the screen.

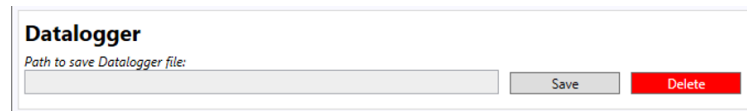
If it is pressed and the settings have not been saved using the above procedure, they will be lost forever.

DATALOGGER

The third option offered by the Meler APP is to download the datalogger with the unit's production data.

Note: This option is only for Micron + devices.

1. Select COM port.
2. Push "Connect" button. If the computer is able to establish communication with the unit, the status - **Connected** - will be displayed.
3. Push "Jump to Boot" button.
4. Press the "Save" button to open a window where you can choose the path to save the file.



Datalogger section

Note: the "Delete" button that appears in red is used to delete Datalogger data of the unit.

If it is pressed and the settings have not been saved using the above procedure, they will be lost forever.



Focke Meler Gluing Solutions S.A.
Pol. Arazuri-Orkoien, c/B, nº3A
E-31170 Arazuri-Navarra-Spain
Tel. +34 948 351 110